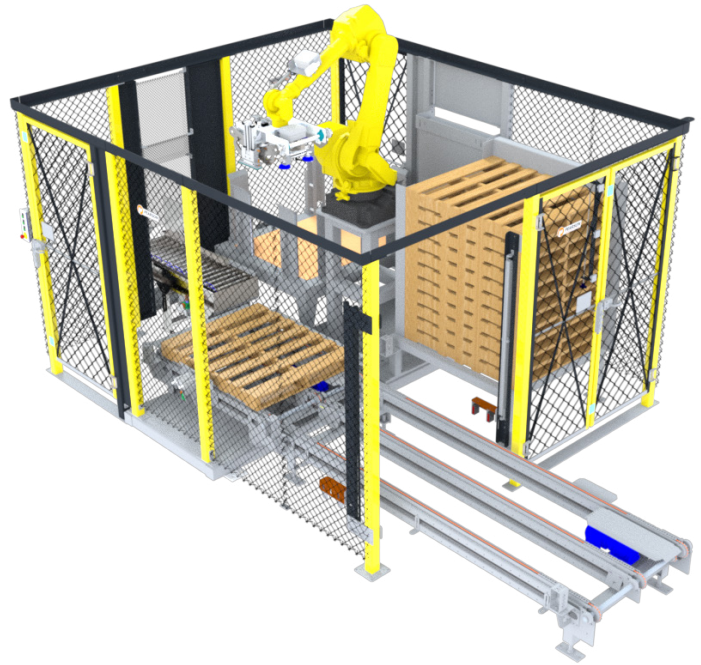


RPC-PH Pallet Handling Palletizer

Pearson's Pallet Handling Palletizer not only automates the pallet load and discharge function but it also supports slip sheet handling. An empty pallet and associated slip sheet is picked by the robot and placed at the palletizing location while full pallets are conveyed out of the work cell. The cell supports cases/trays and bliss boxes up to 40 lbs. and comes mostly pre-assembled on a common base for easy placement and start-up.



Speed	Up to 12 cases/min
Min. Case Size Base Machine	9" (L) x 5" (W) x 6" (H)
Max. Case Size Base Machine	17.5" (L) x 15" (W) x 20" (H)
Max. Case Weight	Up to 40 lbs
Changeover	Easy-to-use pallet configuration tool to create, modify, copy or clear new pattern recipes on the HMI.
Machine Size Range (ft)	20 (L) x 11 (W) x 8.5 (H)
Controls	Allen-Bradley PLC PackML Compliant PanelView Color HMI
Air Requirements	80 PSI
Power Requirements	460 VAC
Disconnect Sizes	60 Amps

Standard Features

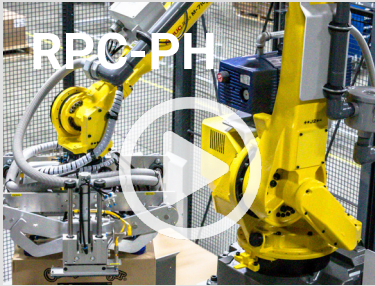
- HMI with User Centric Design
- Pallet Configuration Tool
- Easily Accessible Grace Port
- Remote Access Support Capability

Popular Upgrade Options

- Slip Sheet Magazine
- Air-Conditioner
- Low-Temp Environment
- Plant Level Ethernet Connection
- Vacuum Pump

Resources

To view videos or download floorplans of the base machine, please click on the links



RPC-PH Standard Palletizer
Floor Plan



Standard
Component
List



Ewon Remote
Access Router
Information

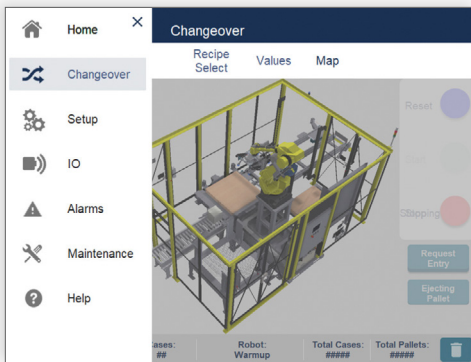


User Centric Design

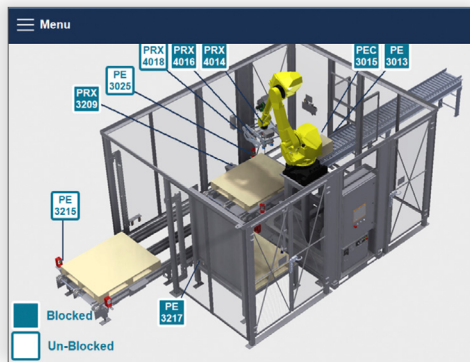
Minimize training time | Increase changeover and fault-recovery speed | Promote improved machine maintenance

Machine operators that perform their tasks independently free up maintenance time and keep lines running smoother. Yet frequent turnover, language barriers, and skill gaps in these positions pose significant challenges to operations teams asked to meet production goals while reducing costs in the process. Pearson's User Centric Design is there to help.

With an uncluttered design, intuitive navigation, interactive guides, live sensor maps and advanced maintenance features, the HMI has morphed into a personal assistant.



Main Navigation



Sensor Map Screen



Changeover Instructions



**Not just a
great product
but a reliable
partner**

- Find reliable, thought-out solutions based on 60 years of experience | 30 years of robotic integration
- Expect a rugged machine design optimized for high-volume 24/7 operations
- Optimally support a high-turnover labor force with an intuitive Human Machine Interface (HMI)
- Benefit from a uniform user interface for your erecting, packing, sealing, and palletizing equipment
- Experience premier industry lead-times for faster delivery and shorter down-payment cycles
- Depend on our project managers to provide ongoing visibility to meet delivery timelines and budgets
- Count on comprehensive sales, aftermarket, and service support
- Rely on extensively trained and FANUC Certified technicians to service your equipment
- Always lean on us for 24/7 live service support