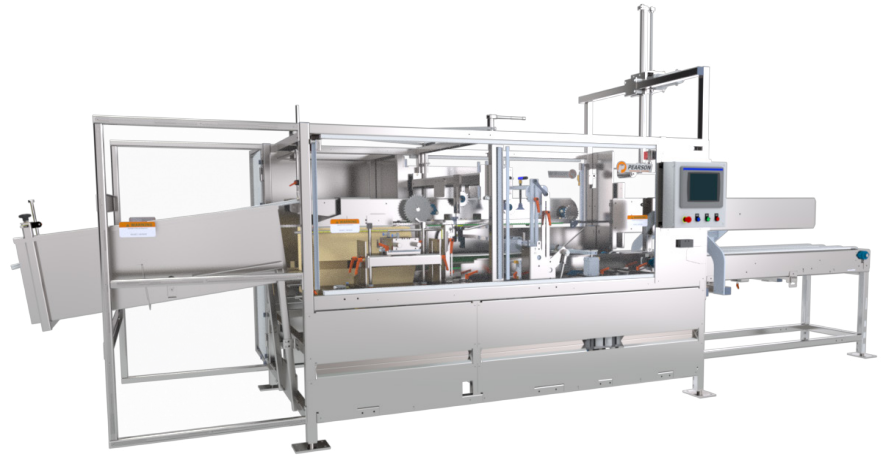






CE50 Case Erector

The rugged CE50 Case Erector provides industry-leading output in a compact footprint. Its proven design, optimized for demanding real-world applications, incorporates highly reliable servo motors on all major motions. To ensure consistent opening of the corrugated blanks, dual opposed vacuum forces grasp the case from both sides, while synchronized dual flight lugs protect case squareness as it travels through the closing and sealing mechanism.



| | | | |
|-----------------------------|---|------------------------------------|--|
| Speed | Up to 50 cases/min | | |
| Min. Case Size Base Machine | 8.75" (L) x 5" (W) x 3.5" (H) | Extended case size range available | |
| Max. Case Size Base Machine | 23.5" (L) x 16" (W) x 18.5" (H) | | |
| Sealing | Hot Melt Glue | | |
| Operation | Servo | | |
| Changeover | Manual with HMI graphical guided instructions, changeover map, scales, pointers, and quick release handles 10 min (estimate for trained technician) | | |
| Construction | Mild Steel Stainless Steel Low Pressure Washdown | | |
| Machine Size Range (ft) | 20 (L) x 8 (W) x 8 (H) | | |
| Controls | Allen-Bradley CompactLogix PLC PackML Compliant PanelView Color HMI | | |
| Air Requirements | 80 PSI | | |
| Power Requirements | 460 VAC | | |
| Disconnect Sizes | 60 Amps | | |
| Air Consumption | 0.742 SCF/Cycle | | |
| Full Load Amp Base Machine | 33.0 Amps | | |
| Case Support | <div> RSC</div> <div> RSC w/ divider</div> <div> HSC</div> <div> CSSC</div> | | |

Standard Features

- HMI with User Centric Design
- Safety Redundancy with CAT 3
- Reliable Non-Contact Interlocks
- High-Visibility Machine Status
- Easily Accessible Grace Port
- Auxillary Operator Station
- Remote Access Support Capability

Popular Upgrade Options

- Oversized or Undersized Case Support
- Extended Magazine
- Glue on Demand System
- High-Capacity Adhesive Feeder
- Air-Conditioner
- Low-Temp Environment
- Plant Level Ethernet Connection
- Portability

Resources

To view videos or download floorplans of the base machine, please click on the links



CE50 Left Hand
Floor Plan



CE50 Right-Hand
Floor Plan



Standard
Component
List



Ewon Remote
Access Router
Information

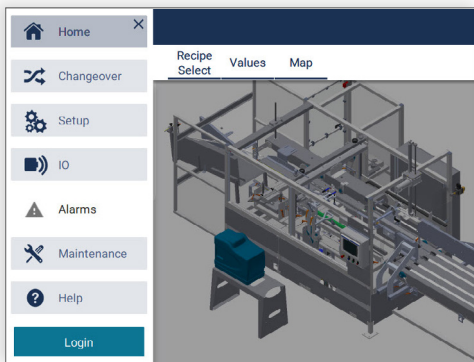


User Centric Design

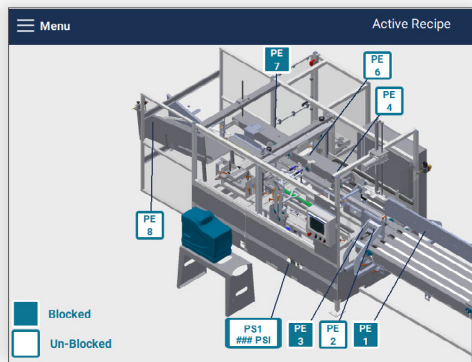
Minimize training time | Increase changeover and fault-recovery speed | Promote improved machine maintenance

Machine operators that perform their tasks independently free up maintenance time and keep lines running smoother. Yet frequent turnover, language barriers, and skill gaps in these positions pose significant challenges to operations teams asked to meet production goals while reducing costs in the process. Pearson's User Centric Design is there to help.

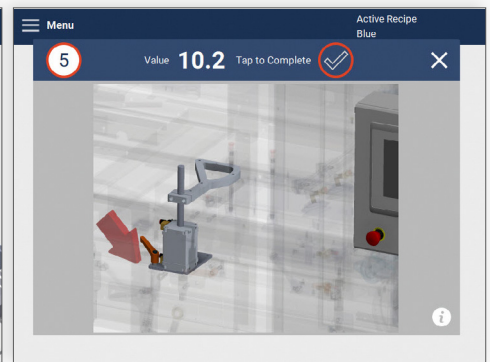
With an uncluttered design, intuitive navigation, interactive guides, live sensor maps and advanced maintenance features, the HMI has morphed into a personal assistant.



Main Navigation



Sensor Map Screen



Changeover Instructions



**Not just a
great product
but a reliable
partner**

- Find reliable, thought-out solutions based on 60 years of experience | 30 years of robotic integration
- Expect a rugged machine design optimized for high-volume 24/7 operations
- Optimally support a high-turnover labor force with an intuitive Human Machine Interface (HMI)
- Benefit from a uniform user interface for your erecting, packing, sealing, and palletizing equipment
- Experience premier industry lead-times for faster delivery and shorter down-payment cycles
- Depend on our project managers to provide ongoing visibility to meet delivery timelines and budgets
- Count on comprehensive sales, aftermarket, and service support
- Rely on extensively trained and FANUC Certified technicians to service your equipment
- Always lean on us for 24/7 live service support