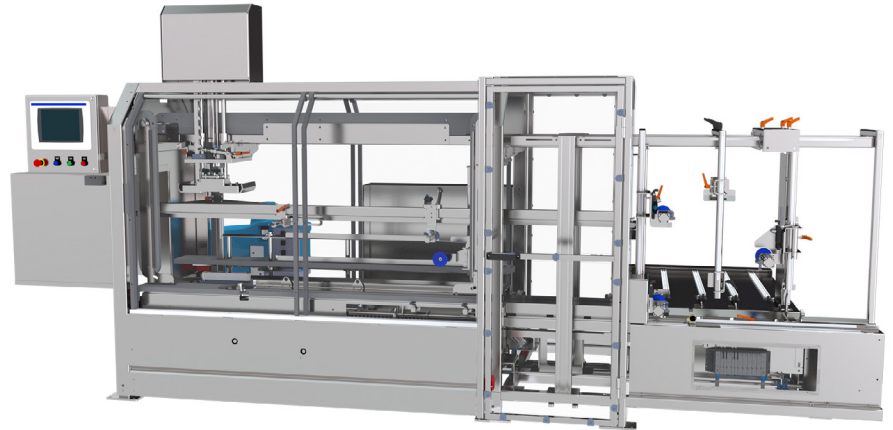



CE25-P Case Erector

Pearson's CE25-P case erector comes with an in-line printer mount compatible with most industry printers. At rates of up to 25 cases per minute, this machine enables on-demand case printing prior to forming. Within a small footprint, the CE25-P Case Erector can support up to four printers – an ideal solution for multi-SKU manufacturers looking to reduce corrugate cost.



Speed	Up to 25 cases/min	
Min. Case Size Base Machine	8" (L) x 5.5" (W) x 3" (H)	Extended case size range available
Max. Case Size Base Machine	24" (L) x 16" (W) x 18.5" (H)	
Sealing	Hot Melt Glue	
Operation	VFD and pneumatic minor and major flap closure	
Changeover	Manual with HMI graphical guided instructions, changeover map, scales, pointers, and quick release handles 8 min (estimate for trained technician)	
Construction	Mild Steel	
Machine Size Range (ft)	14.75 (L) x 5.3 (W) x 6.75 (H)	
Controls	Allen-Bradley CompactLogix PLC PackML Compliant PanelView Color HMI	
Air Requirements	80 PSI	
Power Requirements	460 VAC	
Disconnect Sizes	30 Amps	
Air Consumption	Glue: 1.038 SCF/Cycle	
Full Load Amp Base Machine	Glue: 20 Amps	
Case Support	 RSC RSC w/ divider HSC CSSC	

Standard Features

- HMI with User Centric Design
- Safety Redundancy with CAT 3
- Reliable Non-Contact Interlocks
- High-Visibility Machine Status
- Easily Accessible Grace Port
- Auxillary Operator Station
- Remote Access Support Capability

Popular Upgrade Options

- Oversized or Undersized Case Support
- Extended Magazine
- Glue on Demand System
- High-Capacity Adhesive Feeder
- Addtl. Tape Head
- Air-Conditioner
- Low-Temp Environment
- Hand-Pack Station
- Plant Level Ethernet Connection
- Portability

Resources

To view videos or download floorplans of the base machine, please click on the links



CE25 w/ Printer Mount
Floor Plan



Standard
Component
List



Ewon Remote
Access Router
Information

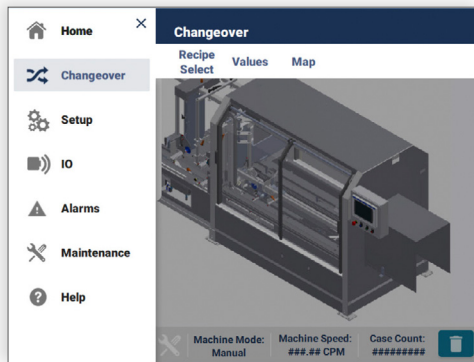


User Centric Design

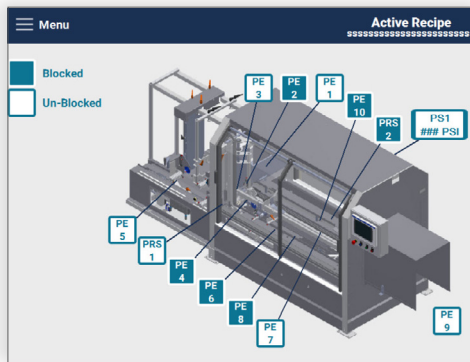
Minimize training time | Increase changeover and fault-recovery speed | Promote improved machine maintenance

Machine operators that perform their tasks independently free up maintenance time and keep lines running smoother. Yet frequent turnover, language barriers, and skill gaps in these positions pose significant challenges to operations teams asked to meet production goals while reducing costs in the process. Pearson's User Centric Design is there to help.

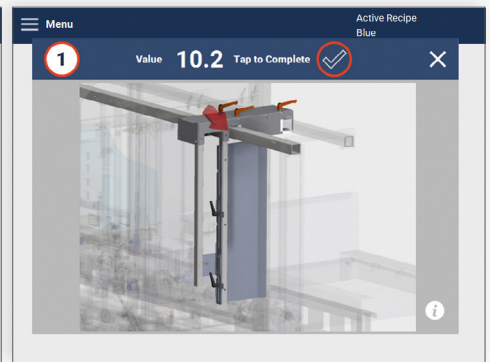
With an uncluttered design, intuitive navigation, interactive guides, live sensor maps and advanced maintenance features, the HMI has morphed into a personal assistant.



Main Navigation



Sensor Map Screen



Changeover Instructions



**Not just a
great product
but a reliable
partner**

- Find reliable, thought-out solutions based on 60 years of experience | 30 years of robotic integration
- Expect a rugged machine design optimized for high-volume 24/7 operations
- Optimally support a high-turnover labor force with an intuitive Human Machine Interface (HMI)
- Benefit from a uniform user interface for your erecting, packing, sealing, and palletizing equipment
- Experience premier industry lead-times for faster delivery and shorter down-payment cycles
- Depend on our project managers to provide ongoing visibility to meet delivery timelines and budgets
- Count on comprehensive sales, aftermarket, and service support
- Rely on extensively trained and FANUC Certified technicians to service your equipment
- Always lean on us for 24/7 live service support