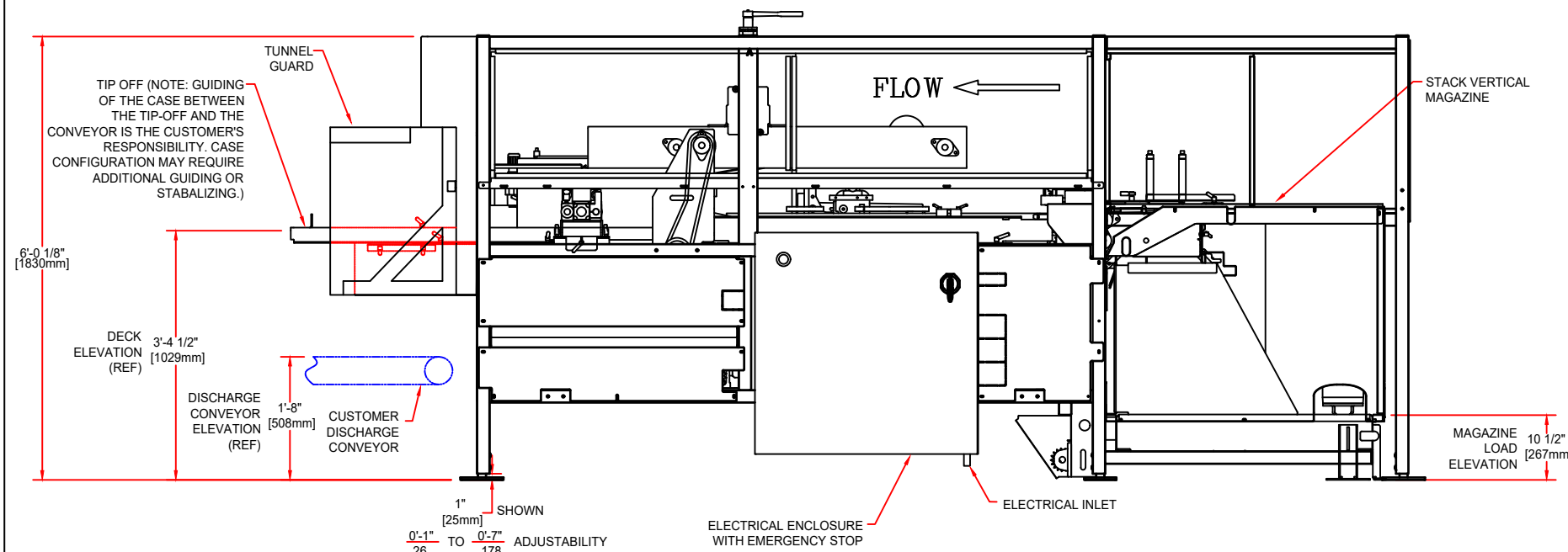


PLAN VIEW



ELEVATION VIEW

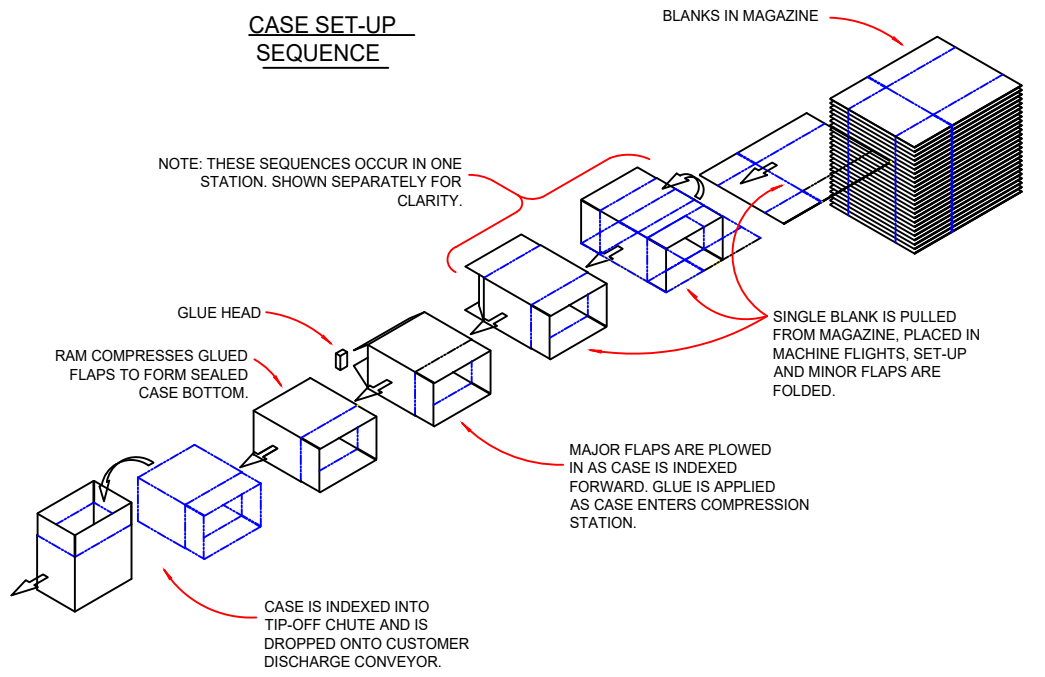
UTILITY REQUIREMENTS

1.341 SCF/CYCLE @ 80 PSI (0.038m PER CYCLE @ 672 CPM)  
 ELECTRICAL REQUIREMENTS:  
 230/460 VOLTS, 3 PHASE, 60 Hz STANDARD  
 FULL LOAD AMPS - 20.0 AMPS  
 LOAD - 11.91 KVA  
 DISCONNECT SIZE - 30 AMP

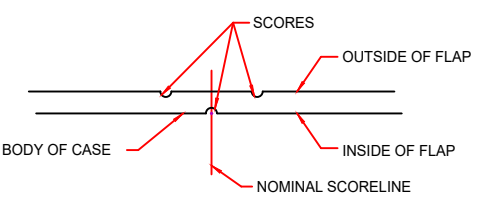
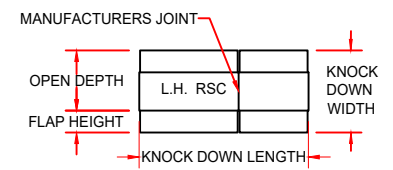
PROPRIETARY  
 NEITHER THIS DOCUMENT NOR THE INFORMATION CONTAINED THEREIN MAY BE REPRODUCED OR DISCLOSED TO ANYONE WITHOUT THE WRITTEN PERMISSION OF R.A. PEARSON CO.

DATE	REVISION	EGN NO.	REV. BY	CHKD BY

CASE SET-UP SEQUENCE



KNOCK-DOWN CASE DESCRIPTION:

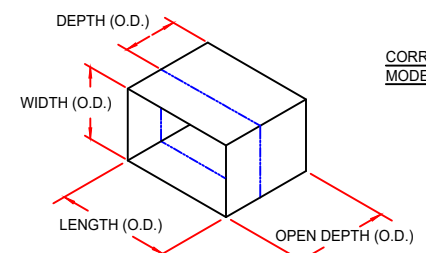


DOUBLE POINT SCORING

THE STYLE AND QUALITY OF SCORING CAN EFFECT THE OPERATION AND PERFORMANCE OF THE CE35-G.  
 PEARSON PACKAGING SYSTEMS RECOMMENDS THAT CASES WITH DOUBLE POINT SCORING BE USED. (SEE SKETCH ABOVE) IN ORDER TO MAXIMIZE THE CONSISTENCY OF OPERATION OF YOUR MACHINE.

SPEED CAPACITY: THE MAXIMUM SPEED THAT THE CE35-G CASE ERECTOR IS CAPABLE OF IS 35 CPM.

CORRUGATED SIZE RANGE  
 MODEL CE35-G



SET-UP CASE

ERECTED CASE SIZES (in)				
	LENGTH	WIDTH	DEPTH	OPEN DEP
MINIMUM	8.75	5.00	3.50	6.00
MAXIMUM	23.50	16.00	18.50	21.00

KNOCKDOWN CASE SIZES (in)			
	KDL	KDW	FLAP
MINIMUM	13.75	8.50	2.50
MAXIMUM	39.50	29.00	8.00

MACHINE SHOWN RUNS RH CASE

PRELIMINARY

(ALL DIMENSIONS ARE APPROXIMATE AND MAY VARY WITH FINAL DESIGN)

2' - 2 7/16" 672			TITLE <b>CE35-G CASE ERECTOR, LH CASE, VERTICAL STACK RIGHT ANGLE MAGAZINE</b>	
DIMENSIONS ARE IN FOOT FRACTION INCH OVER MILLIMETERS.			DR. I.K.A. 5/15/19 CHK. APP.	DWG NO. <b>638034R</b>
			SCALE	SHEET

5120 WEST SUNSET HIGHWAY  
 SPOKANE, WASHINGTON 99224  
 WWW.PEARSONPKS.COM