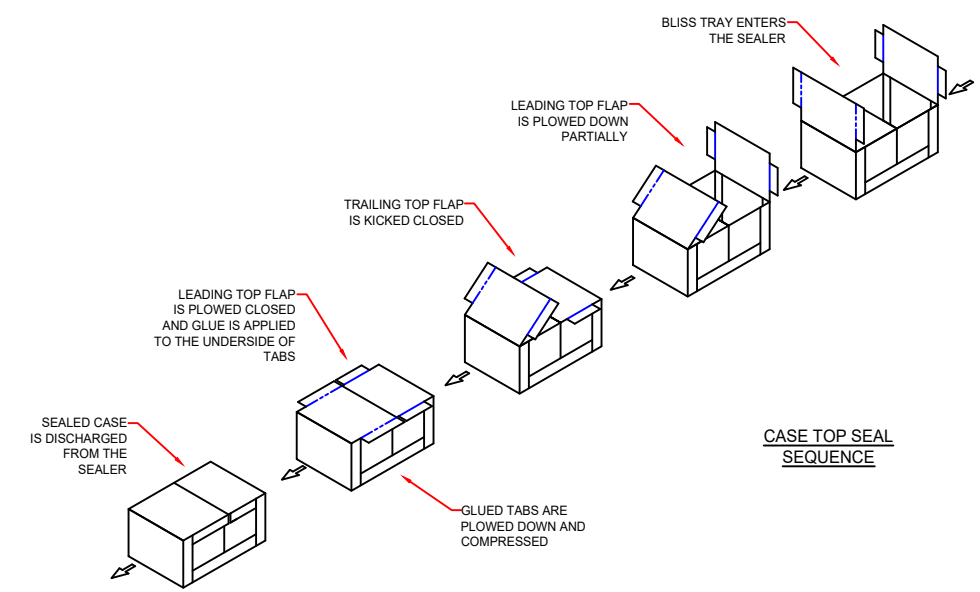
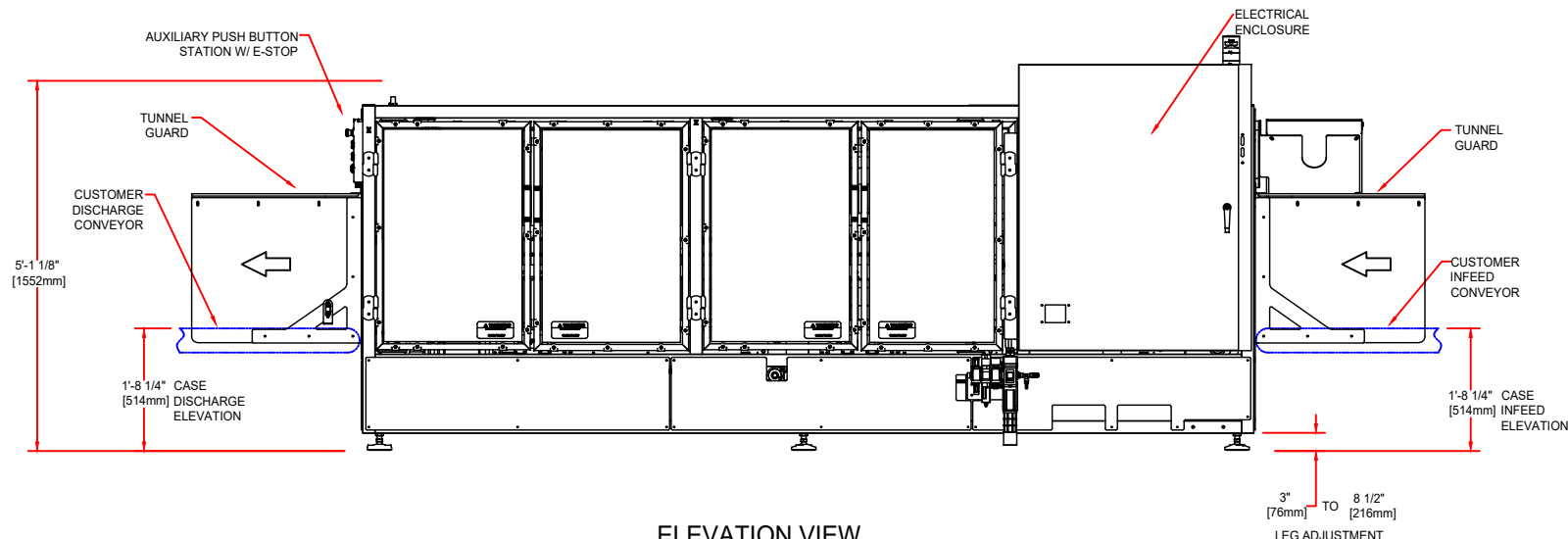


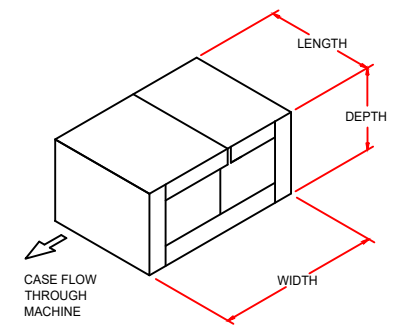
PLAN VIEW



CASE TOP SEAL SEQUENCE



ELEVATION VIEW



STANDARD ADJUSTMENT RANGE		
	MINIMUM	MAXIMUM
LENGTH	7.0'(178)	18.0'(457)
WIDTH	8.0'(203)	20.0'(508)
DEPTH	5.0'(127)	14.0'(356)

UTILITY REQUIREMENTS

AIR REQUIREMENTS: 0.117 SCF/CYCLE @ 80 PSI (0.003m³/CYCLE @ 551.2 KPa)
 ELECTRICAL REQUIREMENTS: 460 V/3 PHASE/60 Hz STANDARD
 FULL LOAD AMPS - 15.0 AMPS
 DISCONNECT SIZE - 30 AMP

NOTE: UTILITIES INFO LISTED IS PRELIMINARY AND IS SUBJECT TO CHANGE WITH FINAL DESIGN

MACHINE WEIGHT (APPROXIMATE): 3,750 LBS (1,689 KG)

MACHINE SPEED: SEE ORDER SPECIFICATION

PRELIMINARY

(ALL DIMENSIONS ARE APPROXIMATE AND MAY VARY WITH FINAL DESIGN)

PROPRIETARY
 NEITHER THIS DOCUMENT NOR THE INFORMATION CONTAINED THEREIN MAY BE REPRODUCED OR DISCLOSED TO ANYONE WITHOUT THE WRITTEN PERMISSION OF R.A. PEARSON CO.

2' - 2 7/16" 672 DIMENSIONS ARE IN FOOT FRACTION INCH OVER MILLIMETERS.			6120 WEST SUNSET HIGHWAY SPOKANE, WASHINGTON 99224 WWW.PEARSONPKS.COM	
	TITLE SS45-G BLISS SEALER RH OP STATION			
DR. NJT CHK. APP.	1/19/22	DWG NO. 1042231R	SCALE	SHEET