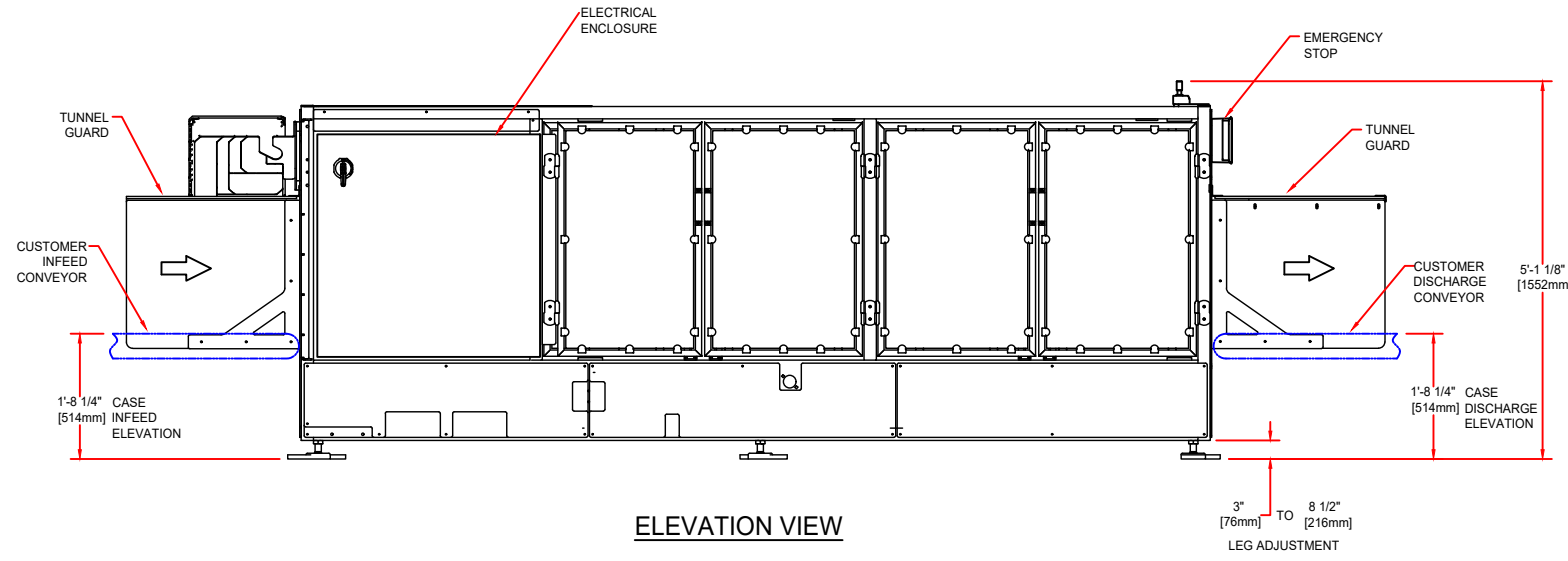
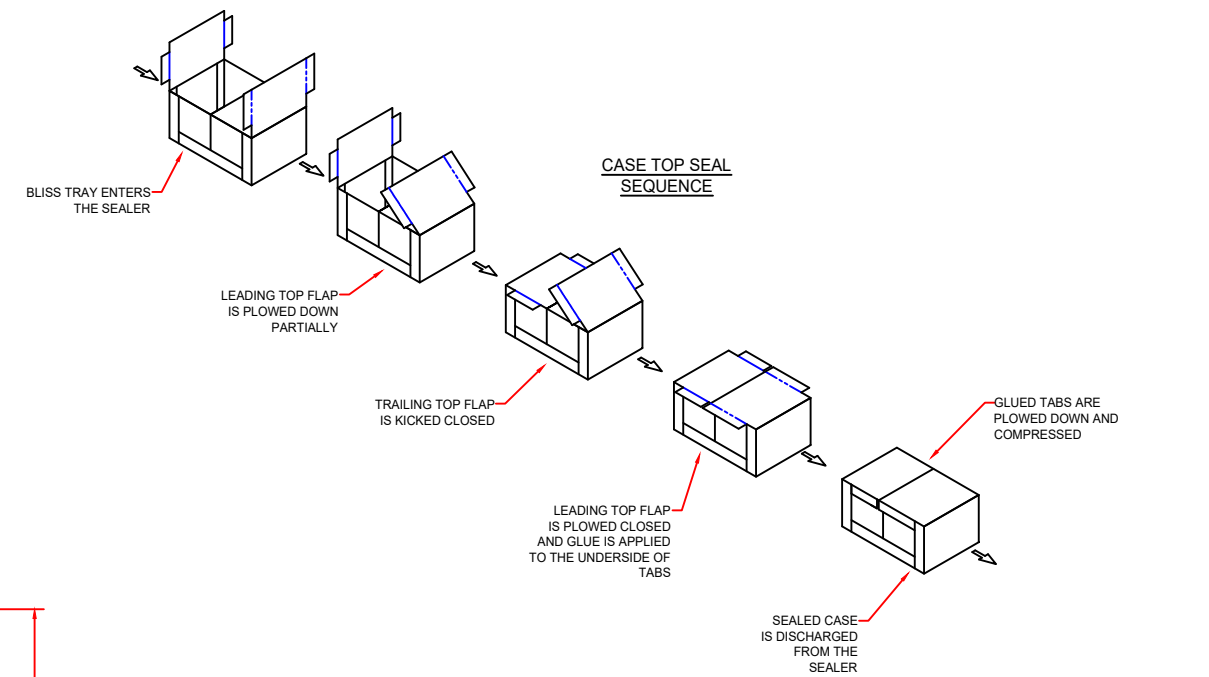


PLAN VIEW



ELEVATION VIEW



STANDARD ADJUSTMENT RANGE		
	MINIMUM	MAXIMUM
LENGTH	7.0'(178)	18.0'(457)
WIDTH	8.0'(203)	20.0'(508)
DEPTH	5.0'(127)	14.0'(356)

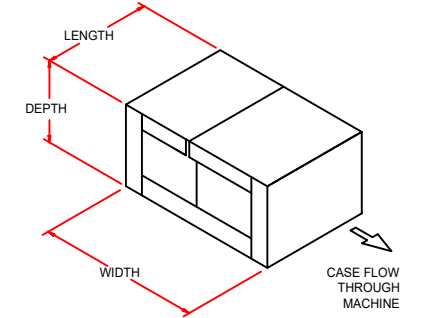
UTILITY REQUIREMENTS

AIR REQUIREMENTS: 0.16 SCF/CYCLE @ 90 PSI (0.0051m³/CYCLE @ 551.2 KPa)
 ELECTRICAL REQUIREMENTS: 460 V/3 PHASE/60 Hz STANDARD
 FULL LOAD AMPS - 15.0 AMPS
 DISCONNECT SIZE - 30 AMP

NOTE: UTILITIES INFO LISTED IS PRELIMINARY AND IS SUBJECT TO CHANGE WITH FINAL DESIGN

MACHINE WEIGHT (APPROXIMATE): _____, 3,750 LBS (1,689 KG)

MACHINE SPEED: SEE ORDER SPECIFICATION



PRELIMINARY

(ALL DIMENSIONS ARE APPROXIMATE AND MAY VARY WITH FINAL DESIGN)

PROPRIETARY
 NEITHER THIS DOCUMENT NOR THE INFORMATION CONTAINED THEREIN MAY BE REPRODUCED OR DISCLOSED TO ANYONE WITHOUT THE WRITTEN PERMISSION OF R.A. PEARSON CO.

DATE	REVISION	EGN NO.	REV. BY	CHKD BY
12/9/20	UPDATE HMI INFO			N.T.
3/27/18	UP-DATE ELEC UTILITY INFO			K.A.
2/8/18	CHANGE HMI TO 1000 FROM 700	-4		K.A.
7/8/16	ADDED CASE DIAGRAM SHOWING CASE LENGTH/WIDTH ORIENTATION IN RELATION TO FLOW THROUGH MACHINE. MIN DEPTH IS 5' (WAS 4')	-3		K.A.
2/23/16	SHOW NEW GUARD CONFIGURATION WITH TUNNEL GUARDS	-2		K.A.
10/30/15	UP-DATE MACHINE WEIGHT (WAS 2,500 LBS)	-1		K.A.

2' - 2 7/16"
 672
 DIMENSIONS ARE IN FOOT FRACTION INCH OVER MILLIMETERS.

PEARSON
 PACKAGING SYSTEMS
 8120 WEST SUNSET HIGHWAY
 SPOKANE, WASHINGTON 99224
 WWW.PEARSONPKS.COM

TITLE
**SS45-G BLISS SEALER
 LH OP STATION**

DR. K.A. 9/11/13
 CHK. _____
 APP. _____

DWG NO.
720644L-4

SCALE _____ SHEET _____