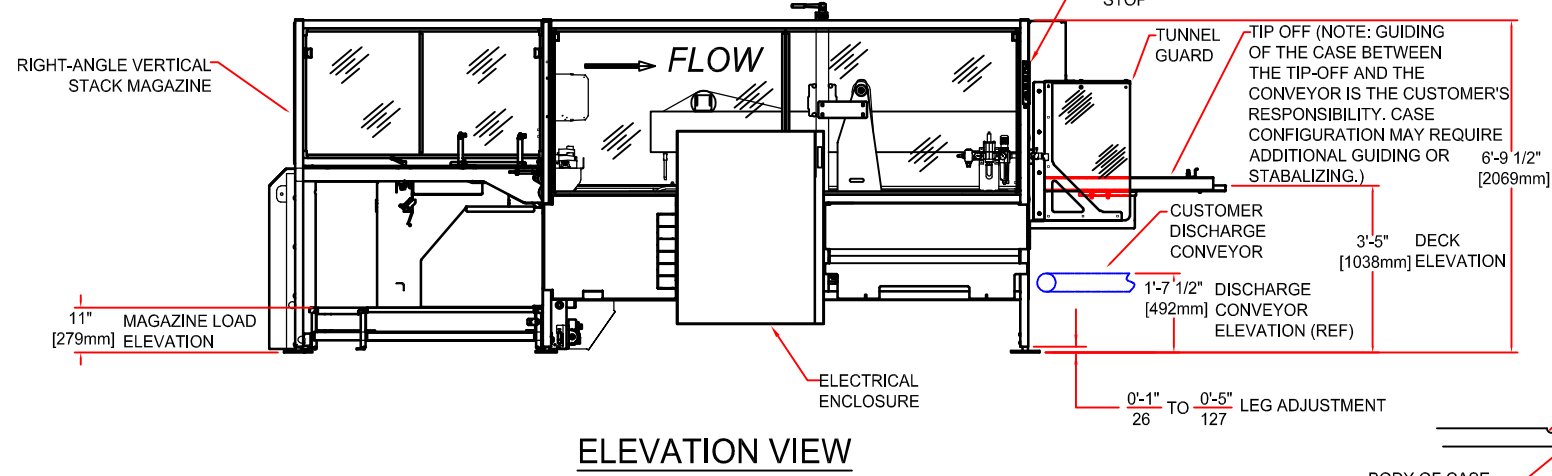
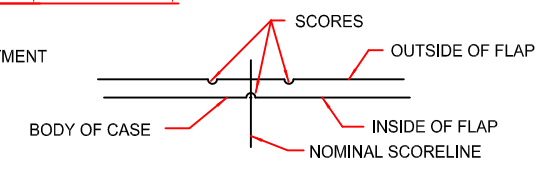


**PLAN VIEW**

**CASE SET-UP SEQUENCE**



**ELEVATION VIEW**



**DOUBLE POINT SCORING**  
 THE STYLE AND QUALITY OF SCORING CAN EFFECT THE OPERATION AND PERFORMANCE OF THE CE35-20T. PEARSON PACKAGING SYSTEMS RECOMMENDS THAT CASES WITH DOUBLE POINT SCORING BE USED. (SEE SKETCH ABOVE) IN ORDER TO MAXIMIZE THE CONSISTENCY OF OPERATION OF YOUR MACHINE.

**UTILITY REQUIREMENTS**  
 AIR REQUIREMENTS : 1.72 SCF/CYCLE @ 80 PSI (0.048m<sup>3</sup>PER CYCLE @ 551.2 KPa)  
 ELECTRICAL REQUIREMENTS : 230/460 VOLTS, 3 PHASE, 60 Hz STANDARD  
 FULL LOAD AMPS - 16.3 AMPS @ 460V  
 DISCONNECT SIZE - 30 AMP

**POWER REQUIREMENTS ARE FOR BASE MACHINE AND CUSTOM OPTIONS MAY RESULT IN CHANGES**

MACHINE WEIGHT: APPROX. 4,250 LBS. (1,913 Kg.)

**STANDARD RSC CORRUGATED SIZE RANGE**

**KNOCKDOWN CASE SIZES (IN)**

	KDL	KDW	FLAP
MINIMUM	20.00	14.50	4.00
MAXIMUM	50.00**	42.00	12.00

\*\* SOME LENGTH / WIDTH COMBINATIONS MAY EXCEED STANDARD KD CASE LENGTH MAXIMUM.

**ERECTED CASE SIZE**

CASE	LENGTH	WIDTH	DEPTH	OPEN DEPTH
MINIMUM	12.00	8.00	4.75	10.50
MAXIMUM	30.00	24.00	26.0	30.00

\*12.00 INCH MIN. WITH HIGH SPEED OPTION

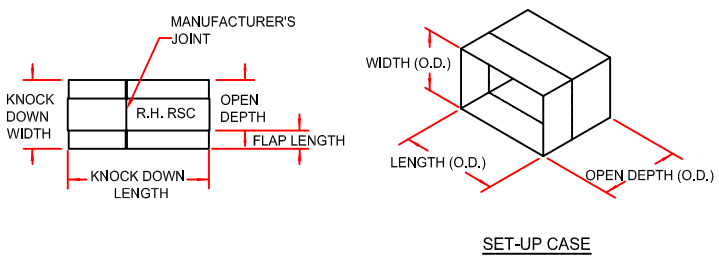
**MACHINE SHOWN RUNS RH CASES**

**PRELIMINARY**

(ALL DIMENSIONS ARE APPROXIMATE AND MAY VARY WITH FINAL DESIGN)

PROPRIETARY  
 NEITHER THIS DOCUMENT NOR THE INFORMATION CONTAINED THEREIN MAY BE REPRODUCED OR DISCLOSED TO ANYONE WITHOUT THE WRITTEN PERMISSION OF R.A. PEARSON CO.

**KNOCK-DOWN CASE DESCRIPTION**



DATE	REVISION	ECN NO.	REV. BY	CHKD BY
12/10/20	UPDATE UTILITIES		BGP	
2/17/16	ADDED TIP-OFF NOTE		K.A.	
7/10/14	14.5 MIN KD WIDTH WAS 14.0 (PER ESTIMATOR)		K.A.	
6/8/14	PV +6 7 INCH HMI WAS PV 600 HMI		K.A.	
12/21/12	ADD TUNNEL GUARD		K.A.	
10/19/12	UP-DATE ELEC UTIL INFO, DELETE MACH HAND INFO		K.A.	
9/27/11	4,250 LBS WAS 5,120 LBS. (SHIPPING WEIGHT)		K.A.	
2/26/10	MOVED R.H. TEXT NEXT TO RSC TEXT IN KD DIAGRAM		K.A.	
5/15/09	NEW CASE HAND DEFINITION, DWG NO WAS E558491		K.A.	
8/8/08	ENCLOSURE SHOWN ON WRONG SIDE IN PLAN VIEW		K.A.	
4/15/08	UP-DATED MIN DEPTH AND OPEN DEPTH DIM		K.A.	

2' - 2 7/16" 672

DIMENSIONS ARE IN FOOT FRACTION INCH OVER MILLIMETERS.

**PEARSON PACKAGING SYSTEMS**  
 8130 WEST SUNSET HIGHWAY  
 SPOKANE, WASHINGTON 99214  
 WWW.PEARSONPKG.COM

TITLE  
 CE35-20T, RH, CASE ERECTOR, RIGHT ANGLE VERTICAL STACK MAGAZINE

DR. JFK  
 CHK.  
 APP.

DWG NO.  
 639460L

SCALE N/A  
 SHEET 1 OF 1