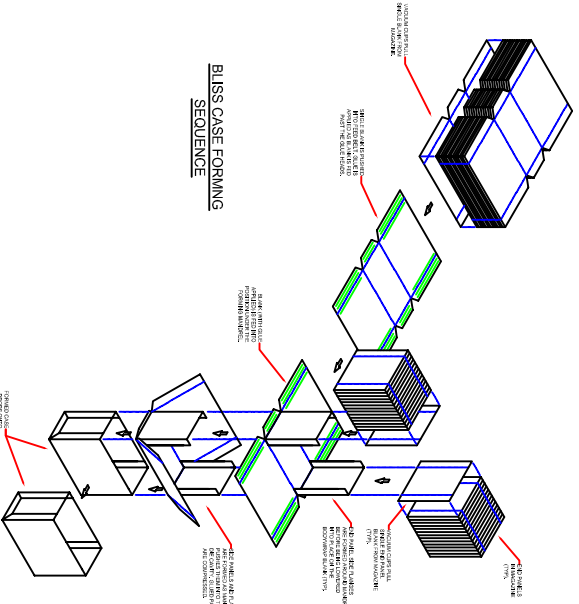
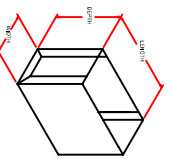


NOTE: WHEN TRAY SIDE DISCHARGE OPTION IS USED, 4 INCHES IS ADDED TO THE OVERALL HEIGHT OF THE MACHINE.



BLISS CASE FORMING SEQUENCE



FORMED CASE SIZE

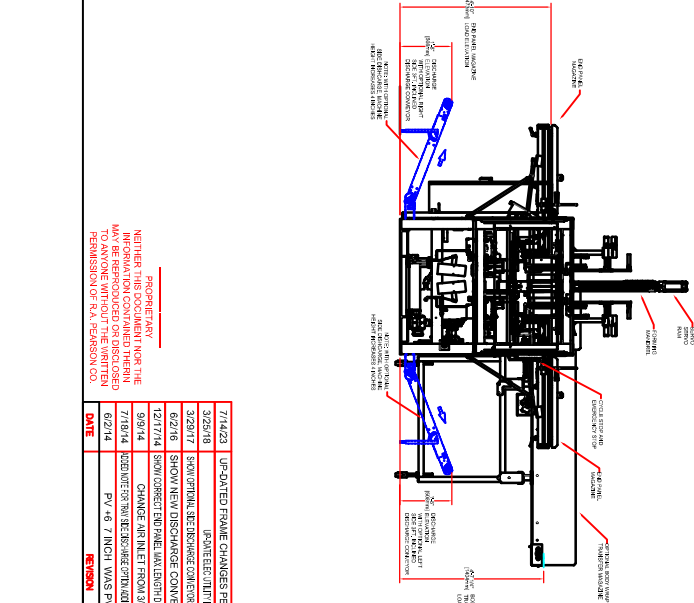
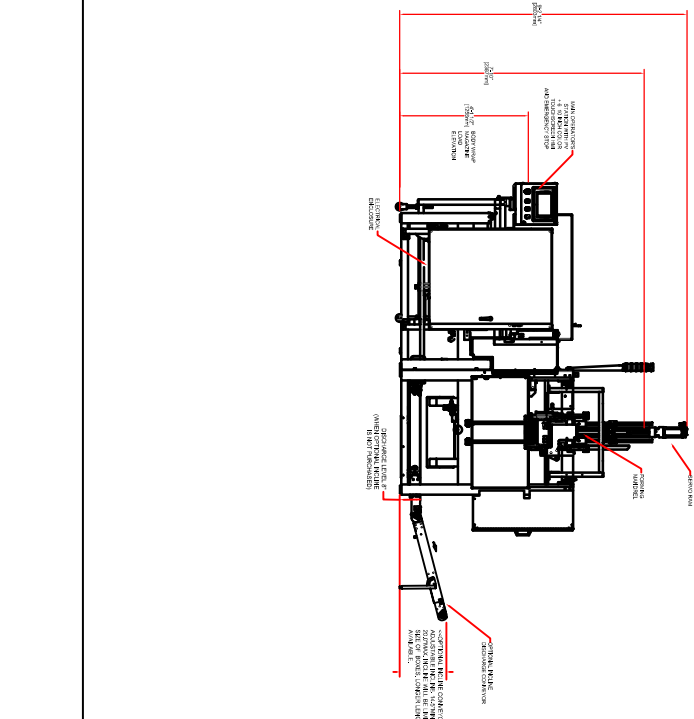
DESCRIPTION	UNIT	VALUE
LENGTH	INCHES	10 1/2
WIDTH	INCHES	10 1/2
HEIGHT	INCHES	10 1/2

UTILITY REQUIREMENTS

208V 3PH 4W 60HZ
 100 AMP 3PH 4W 60HZ
 100 AMP 3PH 4W 60HZ
 100 AMP 3PH 4W 60HZ

SPEED CAPACITY

1000 CASES PER HOUR



NEITHER THE INFORMATION CONTAINED HEREIN NOR THE DESIGN THEREOF SHALL BE REPRODUCED OR TRANSMITTED IN ANY FORM OR BY ANY MEANS, ELECTRONIC OR MECHANICAL, INCLUDING PHOTOCOPYING, RECORDING, OR BY ANY INFORMATION STORAGE AND RETRIEVAL SYSTEM, WITHOUT THE WRITTEN PERMISSION OF P.A. PAFSON, CO.

DATE	REVISION	BY	CHKD	APP'D
7/14/23	UPDATED FRAME CHANGES PER BRANDON RYAN	K.A.		
3/29/18	UPDATE ELEC. I/O	K.A.		
3/29/18	SHOW INITIAL SET DISCHARGE CONVERTER LEFT HEIGHT DISCHARGE	K.A.		
6/27/16	SHOW NEW DISCHARGE CONVERTER ELEV. RANGE	K.A.		
12/17/14	SHOW CORRECT END PANEL MAX LENGTH DUE TO PANEL LOCATION	K.A.		
9/9/14	CHANGE AIR INLET FROM 3/4 TO 1 IN. IPT	K.A.		
7/18/14	ADD NOTES TO REDESIGN OF THE MACHINE TO INCLUDE 1000 CASES PER HOUR	K.A.		
6/27/14	PV 46 7 INCH WAYS PV 600 MMH	K.A.		

PRELIMINARY
 (ALL DIMENSIONS ARE APPROXIMATE AND MAY VARY WITH FINAL DESIGN)

DATE	7/14/23
TIME	2 - 2:30 PM
TITLE	BF40-3PB BLISS FORMER
DR	K.A.
CHKD	K.A.
SCALE	DWG NO. 719078
SHEET	1 OF 1